

# The Fullermoney Chart Library USER GUIDE

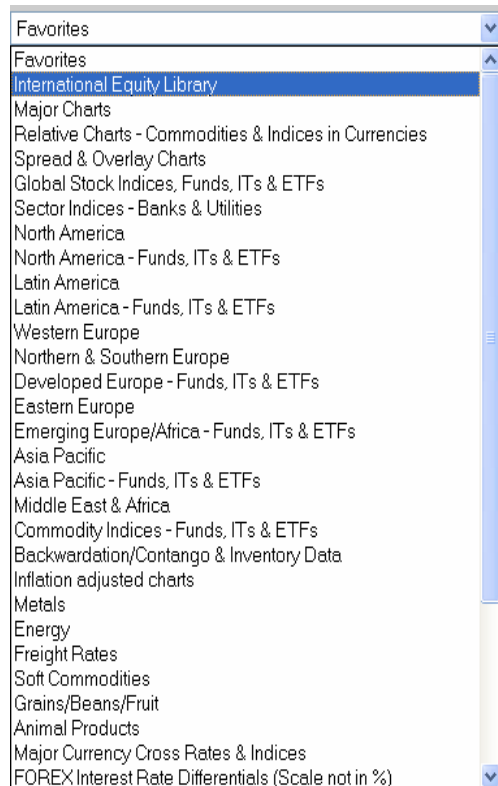
Welcome to the continually evolving Fullermoney Chart Library. We are delighted to announce the launch of this exciting upgraded facility. In line with our Empowerment Through Knowledge theme, this feature has been provided so that subscribers have instant access to important markets. (Note: you may wish to print these user instructions before accessing the Chart Library.)

This user guide explains the core functionality of the Chart Library. We hope that it proves to be of value to you and look forward to any feedback or questions you may have.

## Chart view

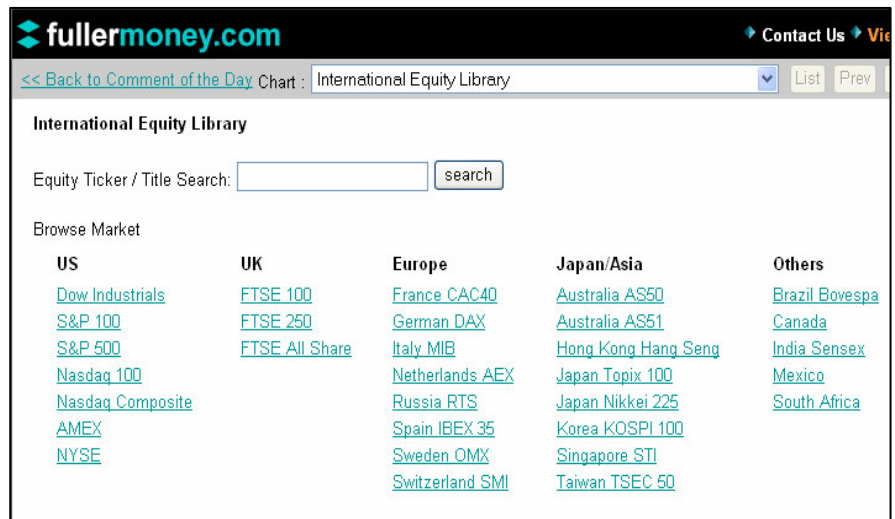


## Drop Down Menu

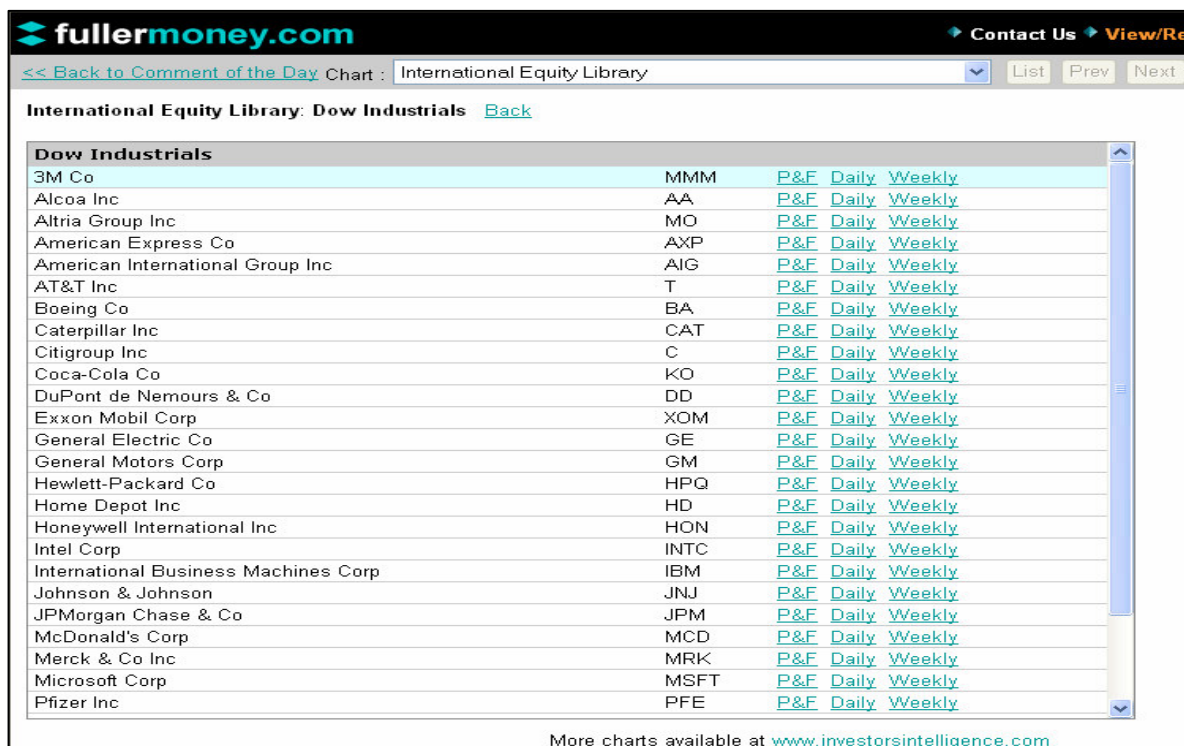


The dropdown menu of chart categories includes all five asset classes as well as a wide array of ratios and spreads, providing subscribers with a quick overview of international markets and relevant funds. The latest category is the International Equity Library, highlighted opposite and displayed below.

## International Equity Library



## Index Constituents



## Search

The Chart Library now has two separate search engines. The first searches the main Chart Library using keywords or Bloomberg tickers. The second is a dedicated equity search which is to be found in the International Equity Section of the main dropdown menu.

**Main Chart Library Search** – search by either keywords or Bloomberg tickers. The example below is a keyword search for ‘Gold’. Results are categorized by where they appear in the main drop down menu of the Chart Library.

Search the Fullermoney Chart Library for

Chart Library Search for **gold**

**Major Charts**

- Gold** **GOLDS** [P&F](#) [Daily](#) [Weekly](#)
- Gold** 2nd Month Continuation **GC2** [P&F](#) [Daily](#) [Weekly](#)

**Relative Charts - Commodities & Indices in Currencies**

- Gold**/Philadelphia XAU Index **GOLDS** [Chart](#)
- Gold**/HUI Goldbugs Index **GOLDS** [Chart](#)
- Gold**/South Africa Gold Mining Index **GOLDS** [Chart](#)
- South Africa **Gold** Mining Index/Philadelphia XAU Index **JGOLD** [Chart](#)
- Gold**/Oil 1 year **GOLDS** [Chart](#)
- Gold**/Oil 10 year **GOLDS** [Chart](#)
- Gold**/Silver 1 year **GOLDS** [Chart](#)
- Gold**/Silver 10 Year **GOLDS** [Chart](#)
- Gold**/Silver Ratio 50 year **GOLDS** [Chart](#)
- S&P500/**Gold** 1 year **SPX** [Chart](#)
- S&P500/**Gold** 10 year **SPX** [Chart](#)
- Dow/**Gold** 1 year **INDU** [Chart](#)
- Dow/**Gold** 50 year **INDU** [Chart](#)
- Nickel / **Gold** **LMNIDS03** [Chart](#)
- Tin / **Gold** **LMSNDS03** [Chart](#)
- Gold** relative to US House prices **GOLDS** [Chart](#)
- Gold** in Euro Proxy **GOLDS** [Chart](#)
- Gold** in South African Rands **GOLDS** [Chart](#)
- Gold** in British Pounds **GOLDS** [Chart](#)
- Gold** in Australian Dollars **GOLDS** [Chart](#)
- Gold** in New Zealand Dollars **GOLDS** [Chart](#)
- Gold** in Canadian Dollars **GOLDS** [Chart](#)
- Gold** in Swiss Francs **GOLDS** [Chart](#)
- Gold** in Japanese Yen **GOLDS** [Chart](#)
- Gold** in old German Deutsche Marks **GOLDS** [Chart](#)
- Gold** in Chinese Renminbi **GOLDS** [Chart](#)
- Gold** in Argentine Peso **GOLDS** [Chart](#)

## International Equity Library

**Search** – This can only be accessed through the Equity Library which can be found on the main drop down menu. As above keywords or Bloomberg tickers can be used. The example below shows the results, which would be returned for a keyword, search on ‘gold’.

**fullermoney.com** [Contact Us](#) [View](#)

<< [Back to Comment of the Day](#) Chart: International Equity Library [List](#) [Prev](#) [Next](#)

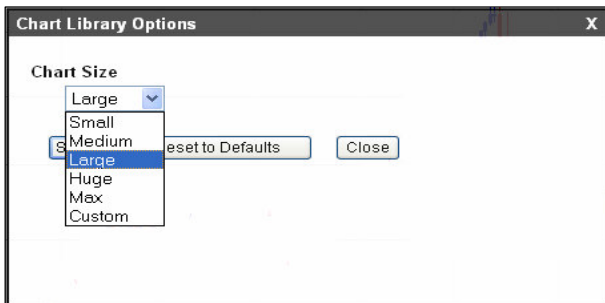
International Equities Search: **gold** [Back](#)

**Search for gold – Click to select**

ANGLOGOLD LTD	AU	US	<a href="#">P&amp;F</a> <a href="#">Daily</a> <a href="#">Weekly</a>
Allied Gold Ltd	AGLD	AIM	<a href="#">P&amp;F</a> <a href="#">Daily</a> <a href="#">Weekly</a>
Anglogold Ltd	ANG	Rest of World	<a href="#">P&amp;F</a> <a href="#">Daily</a> <a href="#">Weekly</a>
Ballarat Goldfields NI	BGF	Asia	<a href="#">P&amp;F</a> <a href="#">Daily</a> <a href="#">Weekly</a>
Ballarat Goldfields NI	BGF	AIM	<a href="#">P&amp;F</a> <a href="#">Daily</a> <a href="#">Weekly</a>
Barrick Gold	ABX	Rest of World	<a href="#">P&amp;F</a> <a href="#">Daily</a> <a href="#">Weekly</a>
Barrick Gold Corp	ABX	US	<a href="#">P&amp;F</a> <a href="#">Daily</a> <a href="#">Weekly</a>
Berna Gold Corp	BAU	AIM	<a href="#">P&amp;F</a> <a href="#">Daily</a> <a href="#">Weekly</a>
Berna Gold Corp	BGO	US	<a href="#">P&amp;F</a> <a href="#">Daily</a> <a href="#">Weekly</a>
CF Ruffer Baker Steel Gold Fund	RFBKSTG	UK	<a href="#">P&amp;F</a> <a href="#">Daily</a> <a href="#">Weekly</a>
Central African Gold	CAN	AIM	<a href="#">P&amp;F</a> <a href="#">Daily</a> <a href="#">Weekly</a>
Central China Goldfields Plc	GGG	AIM	<a href="#">P&amp;F</a> <a href="#">Daily</a> <a href="#">Weekly</a>
China Goldmines	CGM	AIM	<a href="#">P&amp;F</a> <a href="#">Daily</a> <a href="#">Weekly</a>
Cluff Gold Ltd	CLF	AIM	<a href="#">P&amp;F</a> <a href="#">Daily</a> <a href="#">Weekly</a>
Conroy Diamonds & Gold	CDG	AIM	<a href="#">P&amp;F</a> <a href="#">Daily</a> <a href="#">Weekly</a>
DRDGold Ltd	DRD	Rest of World	<a href="#">P&amp;F</a> <a href="#">Daily</a> <a href="#">Weekly</a>
ELDORADO GOLD CORP	EGO	US	<a href="#">P&amp;F</a> <a href="#">Daily</a> <a href="#">Weekly</a>
Eurogold Ltd	EUG	AIM	<a href="#">P&amp;F</a> <a href="#">Daily</a> <a href="#">Weekly</a>
European Goldfields Limited	EGU	AIM	<a href="#">P&amp;F</a> <a href="#">Daily</a> <a href="#">Weekly</a>
Falkland Gold & Minerals	FGML	AIM	<a href="#">P&amp;F</a> <a href="#">Daily</a> <a href="#">Weekly</a>
Freeport-McMoran Copper & Gold Inc	FCX	US	<a href="#">P&amp;F</a> <a href="#">Daily</a> <a href="#">Weekly</a>
GOLD FIELDS LTD NEW	GFI	US	<a href="#">P&amp;F</a> <a href="#">Daily</a> <a href="#">Weekly</a>
GOLDCORP INC NEW	GG	US	<a href="#">P&amp;F</a> <a href="#">Daily</a> <a href="#">Weekly</a>
GOLDEN STAR RES LTD CDA	GSS	US	<a href="#">P&amp;F</a> <a href="#">Daily</a> <a href="#">Weekly</a>
GOLDEN TELECOM INC	GLDN	US	<a href="#">P&amp;F</a> <a href="#">Daily</a> <a href="#">Weekly</a>

# Chart Toolbar

The chart toolbar offers subscribers a number of additional features. To select left mouse click on relevant icon.

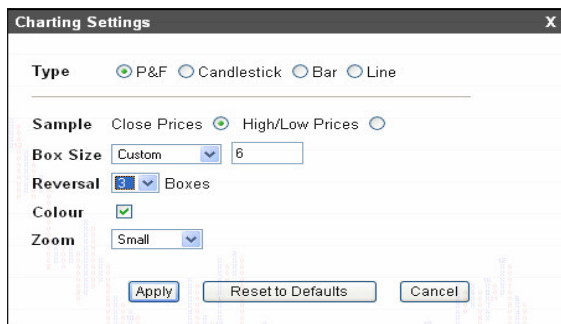


## Options

This feature allows subscribers to dictate the size of the charts displayed in the Chart Library.

# Charting

The Fullermoney Chart Library offers a choice of Point & Figure, Candlestick, Bar and Line charts. Users can still choose point & figure, daily, weekly and monthly charts from the dropdown menu on the upper right-hand side of the screen. However the Charting section of the toolbar allows users to customise their charts. There are two separate menus; one for p&f charts and one for Candlestick, Bar and Line charts.



To select whichever chart type is desired, simply click on the relevant section at the top of the pop up window.

# Chart Types

## Point & Figure

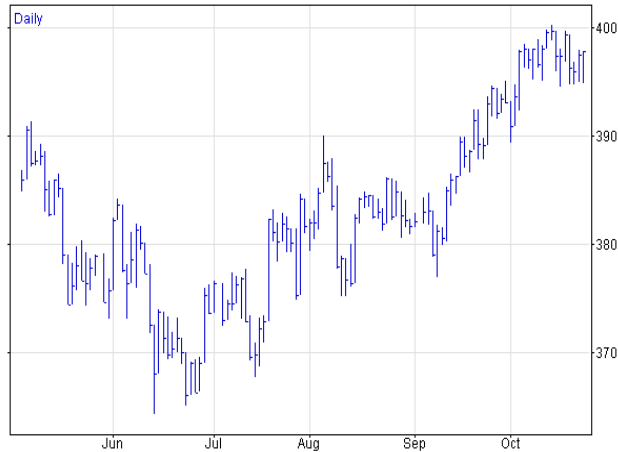


## Candlestick



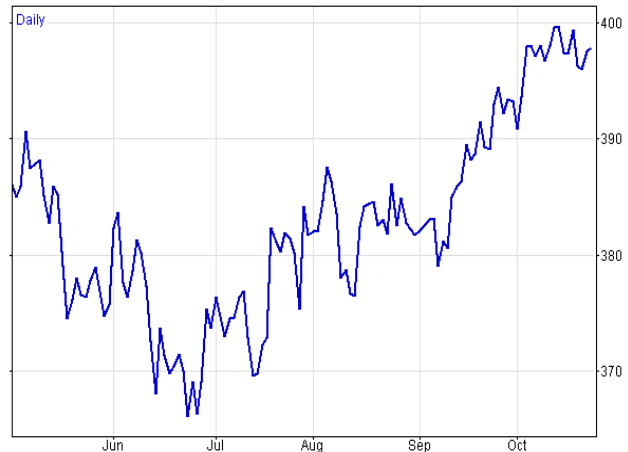
## Bar chart

S&P 500 Banks Index (S5BANK) 397.8 +0.26 www.fullermoney.com 24 Oct 2006



## Line

S&P 500 Banks Index (S5BANK) 397.8 +0.26 www.fullermoney.com 24 Oct 2006



**Relative** – This tool allows users to create ratios, spreads and multiples. First select an instrument, next select which of the 23 popular indices, currencies or commodities to compare it too. You can then select the operation you want the Library to carry out; either, ratio, difference or multiply. The example below is of the Dow Transportation Index divided by Gold.

Options... | Charting... | Reset | Tracking **Off** | Zoom Out

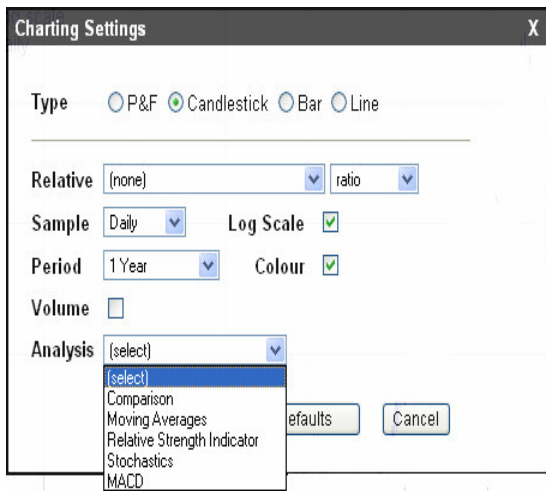
Send to a friend | Add to Favorites

Dow Transportation index (TIR99) / London Spot Gold (GOLDS)

www.fullermoney.com 10 Nov 2006



© 2006 Stockcube Research Ltd



**Sample** - This option allows you to select daily, weekly, monthly & quarterly time periods.

**Log Scale** – Imposes a logarithmic vertical scale.

**Period** - This offers a time span of 3 months to 50 years.

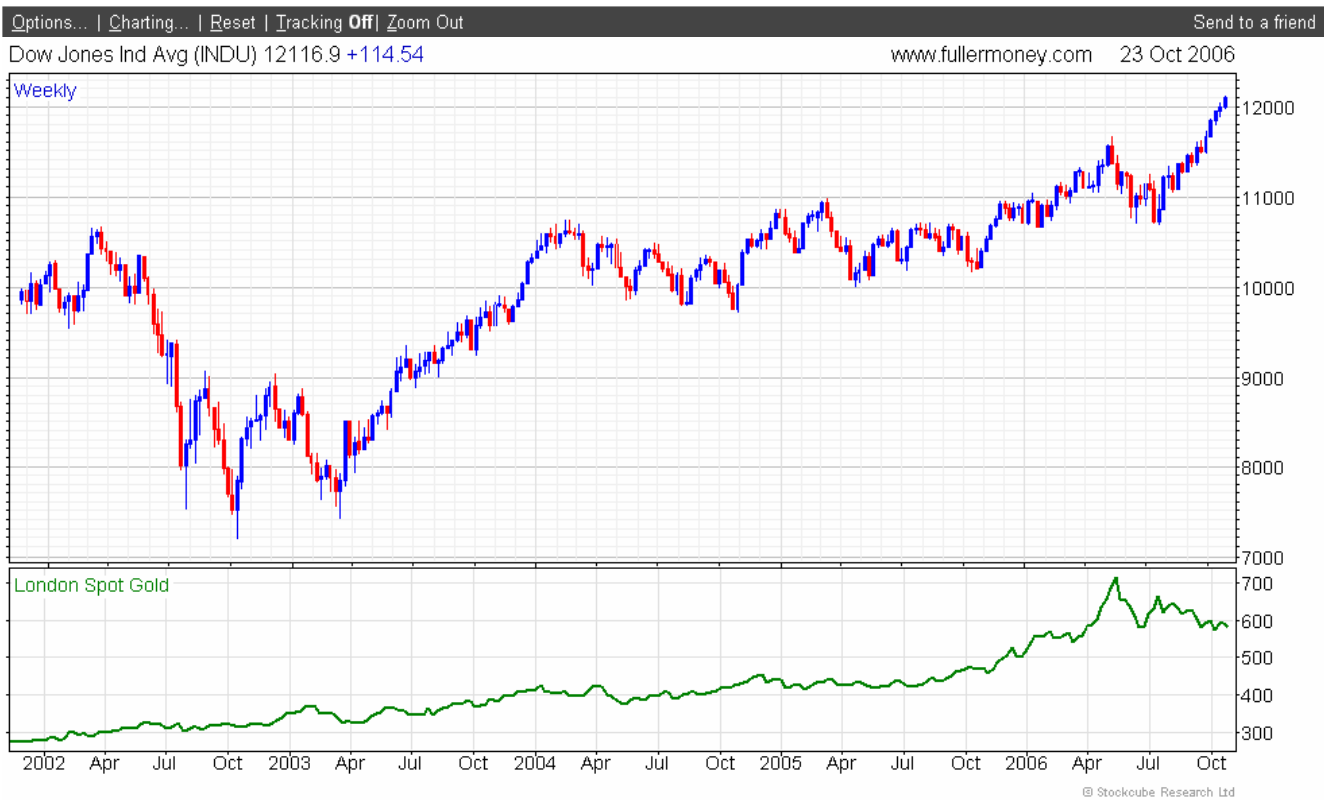
**Colour** - Allows you to switch between blue on white or blue and red chart colours.

**Volume** - Vertical bars which illustrate the number of shares or contracts traded in a security or market over

each unit of time.

**Analysis** - This section contains tools which offer you the ability to compare instruments one above another, moving averages, RSI, Stochastics and MACD.

**Comparison** - This tool allows you to plot and compare the performance of two markets, one above another.

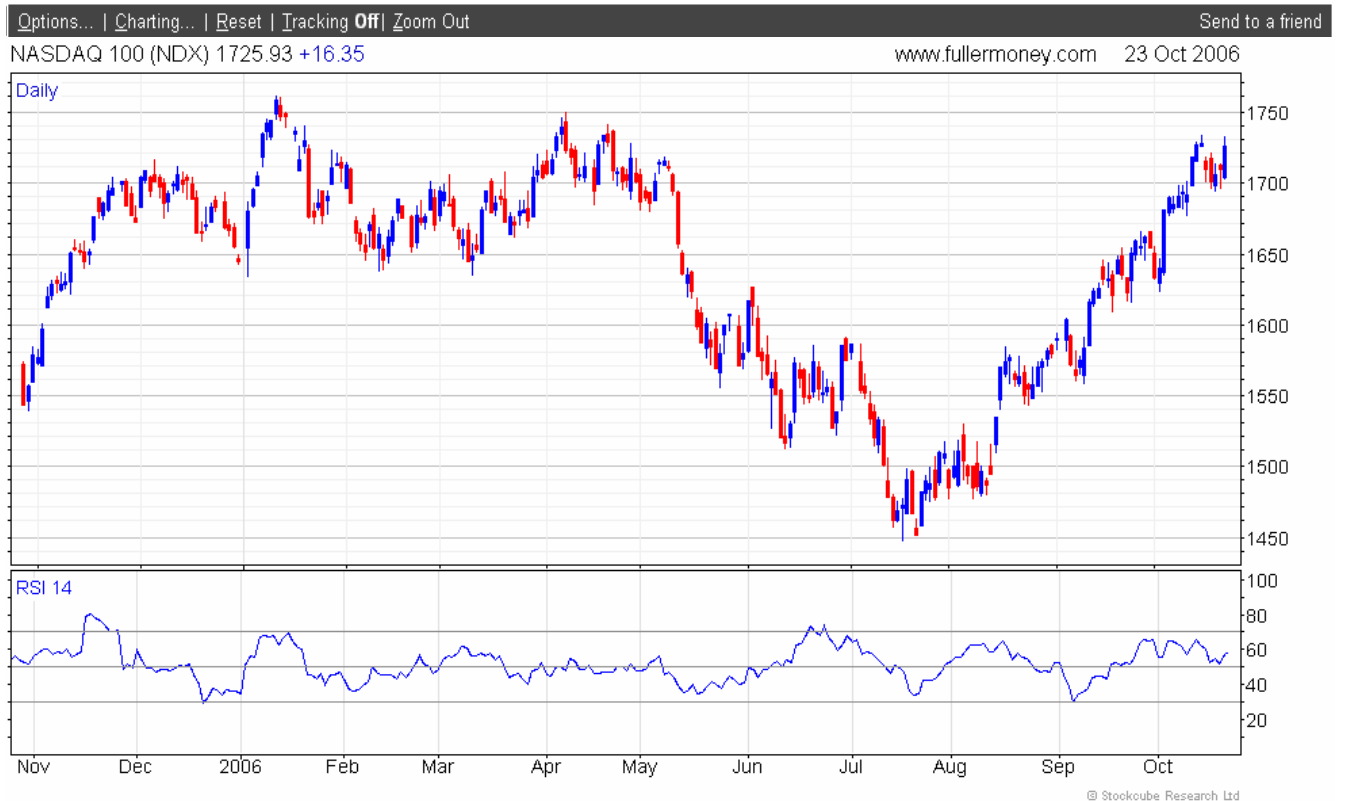


**Moving Averages - A trend smoothing device of specified duration. The widely used 200-day moving average is the Fullermoney default but up to 3 moving averages can be specified in the Charting option window.**



**Relative Strength Indicator - A momentum oscillator that compares the size of recent gains to recent losses. Markets are generally deemed to be short-term overbought once the RSI exceeds the 70% to 80% level. Conversely, if the RSI recedes beneath 30% to 20%, it is described as short-term oversold.**

The indicator is calculated with the following formula:  $RSI = 100 - \frac{100}{1 + RS}$   
**RS = Average of x day's up closes / Average of x day's down closes.**

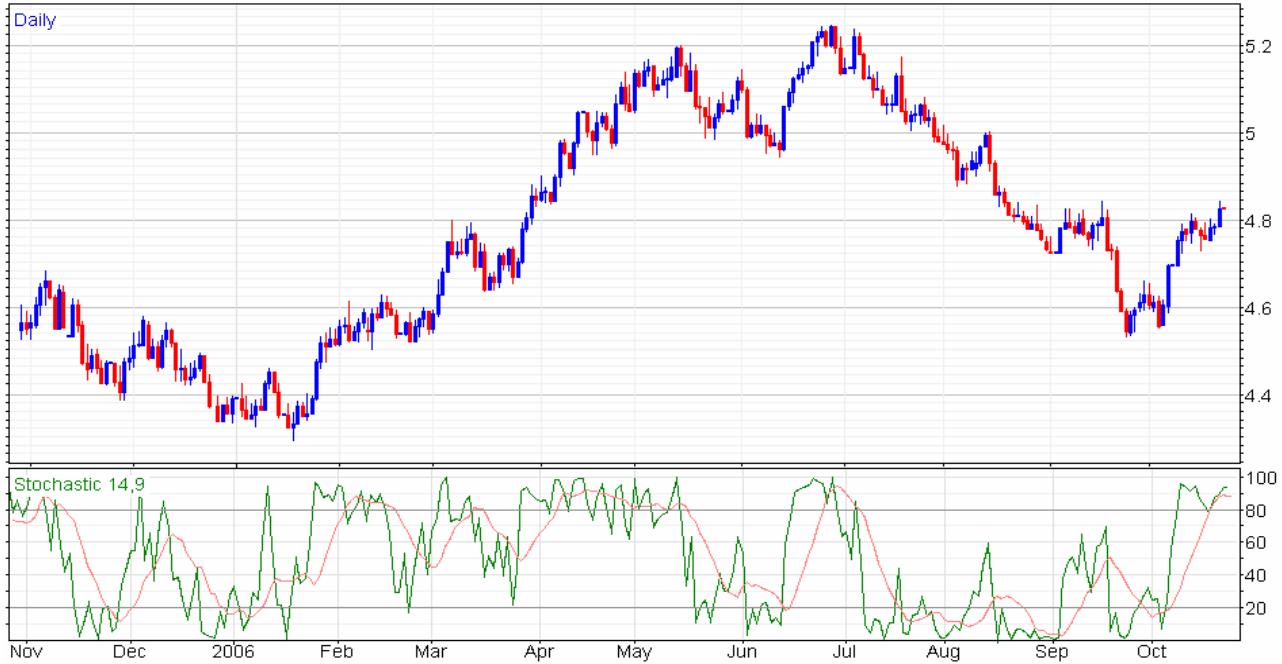


**Stochastics** - A momentum indicator that compares a market's closing price to its price range over a specified period. The indicator is calculated with the following formula:  

$$\%K = 100[(C - L14)/(H14 - L14)].$$

Options... | Charting... | Reset | Tracking **Off** | Zoom Out Send to a friend

US 10 Year Bond Yield (USGG10YR) 4.826 n/c www.fullermoney.com 24 Oct 2006



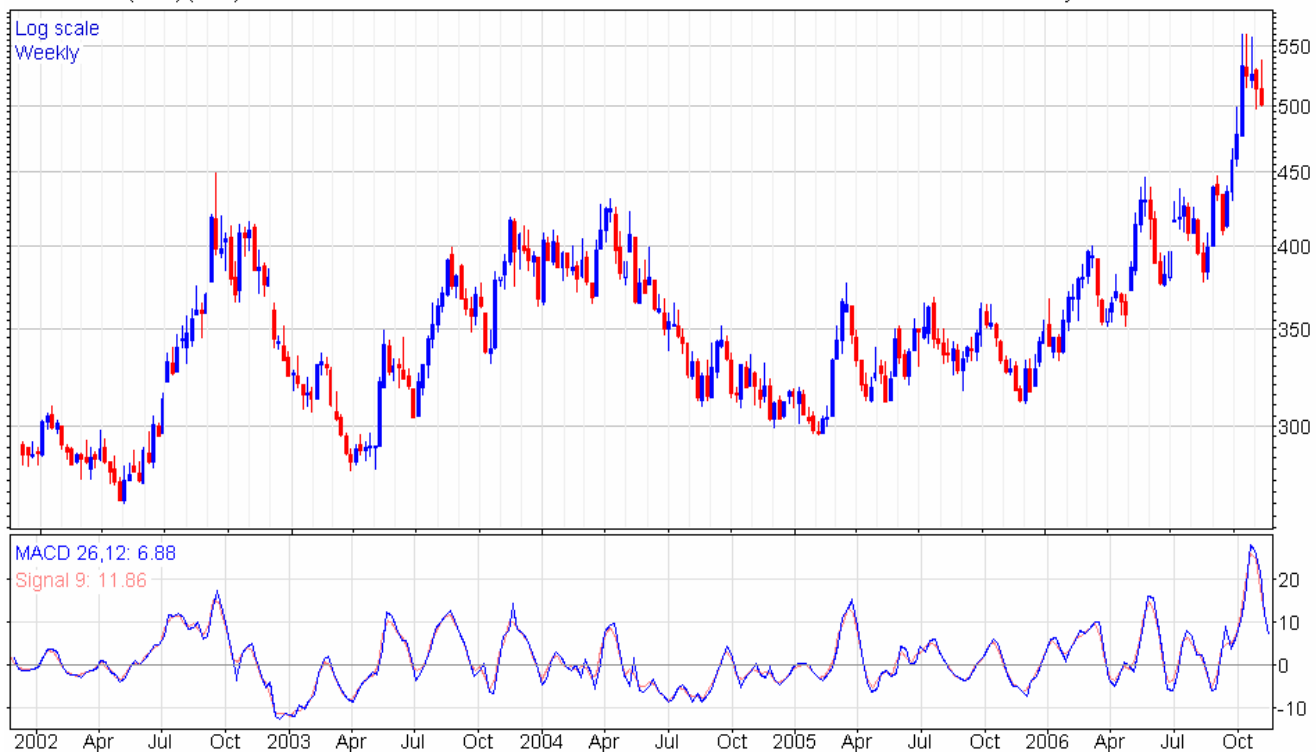
© Stockcube Research Ltd

**MACD** - A trend-following momentum indicator that illustrates the relationship between two moving averages.

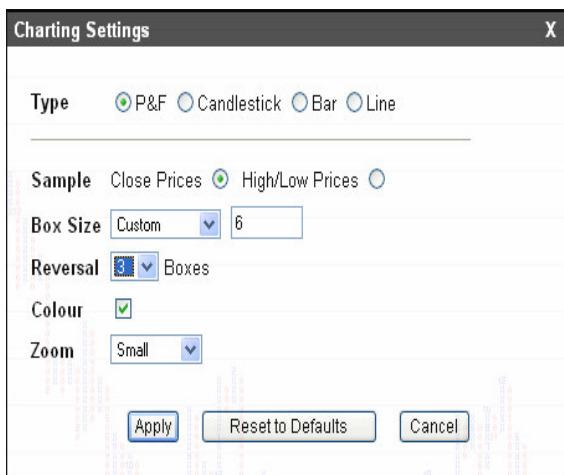
Options... | Charting... | Reset | Tracking **Off** | Zoom Out

Send to a friend | Add to Favorites

Wheat CBT (cont) (W 2) 501 -7.50 www.fullermoney.com 10 Nov 2006



© 2006 Stockcube Research Ltd



## Point & Figure Chart Options

The Point & Figure box size is the minimum price change which must occur before a change is noted on the chart. Columns of 'X's indicate upward momentum while 'O's indicate downward momentum. A p&f reversal is the specified move counter to the prevailing trend which must occur before a new column in the opposite direction is begun.

**Sample** - Choose which prices are used in drawing the chart. The Fullermoney default is close only but high/low price data is also available.

**Box Size** – P&f charts will default to 1%, so if the price is \$100, then each unit of scale would be \$1. However you can choose to display scales from 2% up to 6%. It is also possible to customise the scale using the Custom feature.

**Custom** - The Custom option is the last listing on the bottom of the box size drop down menu. This allows complete customisation of the box size for each security.

**Box Reversal** - Allows subscribers to set the reversal size.

**Suggestion** - the traditional reversal size is three.

## Reset

This option resets all changes made to the Library to the Fullermoney default settings.

## Tracking On/Off

Switches on the cross-hair function for recording numerical price and date.



**Suggestion - The legend box (which includes date, open, high, low, close) can be moved around, or outside the chart view.**

**Subscribers can remove the tracking function either by selecting 'Tracking off' on the toolbar, with the mouse or by pressing the letter 'X' on the keyboard.**

## Zoom

**This interactive tool allow you to analyze finer price detail.**

**Simply choose the start period that you wish to zoom into.**

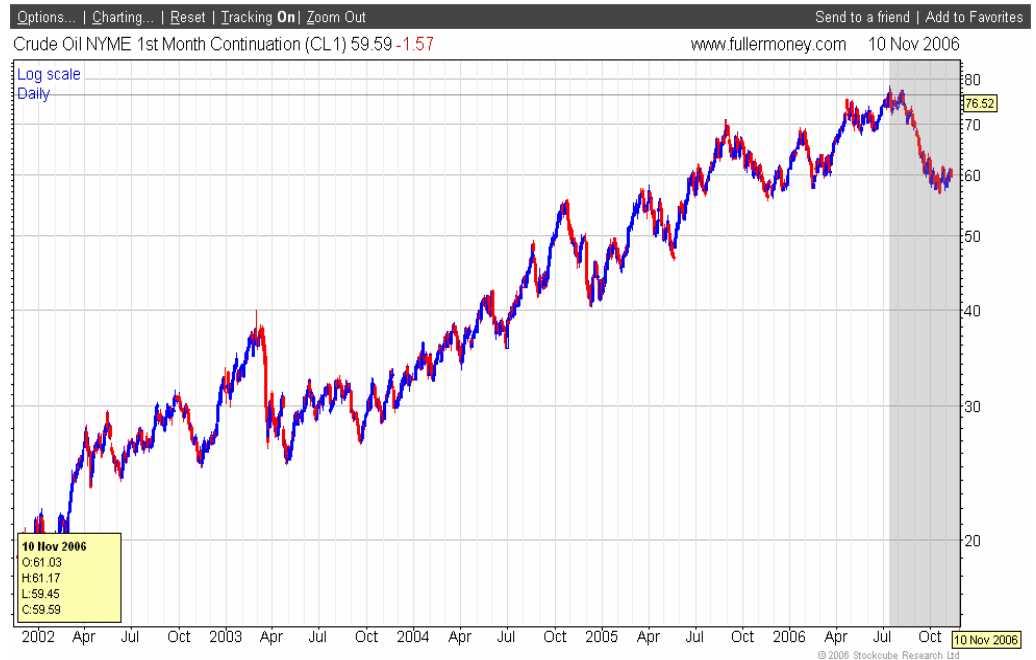
**Hold down the left mouse button and drag the shaded area to the left or right, highlighting the area that you wish to enlarge.**

**As soon as you release the mouse button it will zoom in.**

**You can continue to zoom in until the chart is reduced to two weeks of data.**

**If you start out with a monthly chart the zoom will decide which scale fits the space best and move the period between monthly, weekly and daily accordingly. (see example)**

**Suggestion - To zoom out you can hit the 'Z' key on your keyboard or click on the "reset zoom" link within the chart legend.**

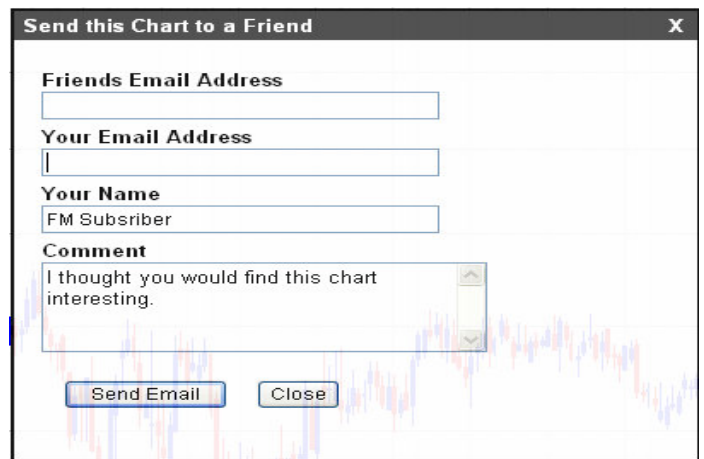


## Send a Fullermoney Chart to a friend

Should you wish to send any of our charts to someone else via email, you will see the [Send this chart to a friend](#) tab above every chart.

All you need do is click this tab and fill in the email address of the recipient.

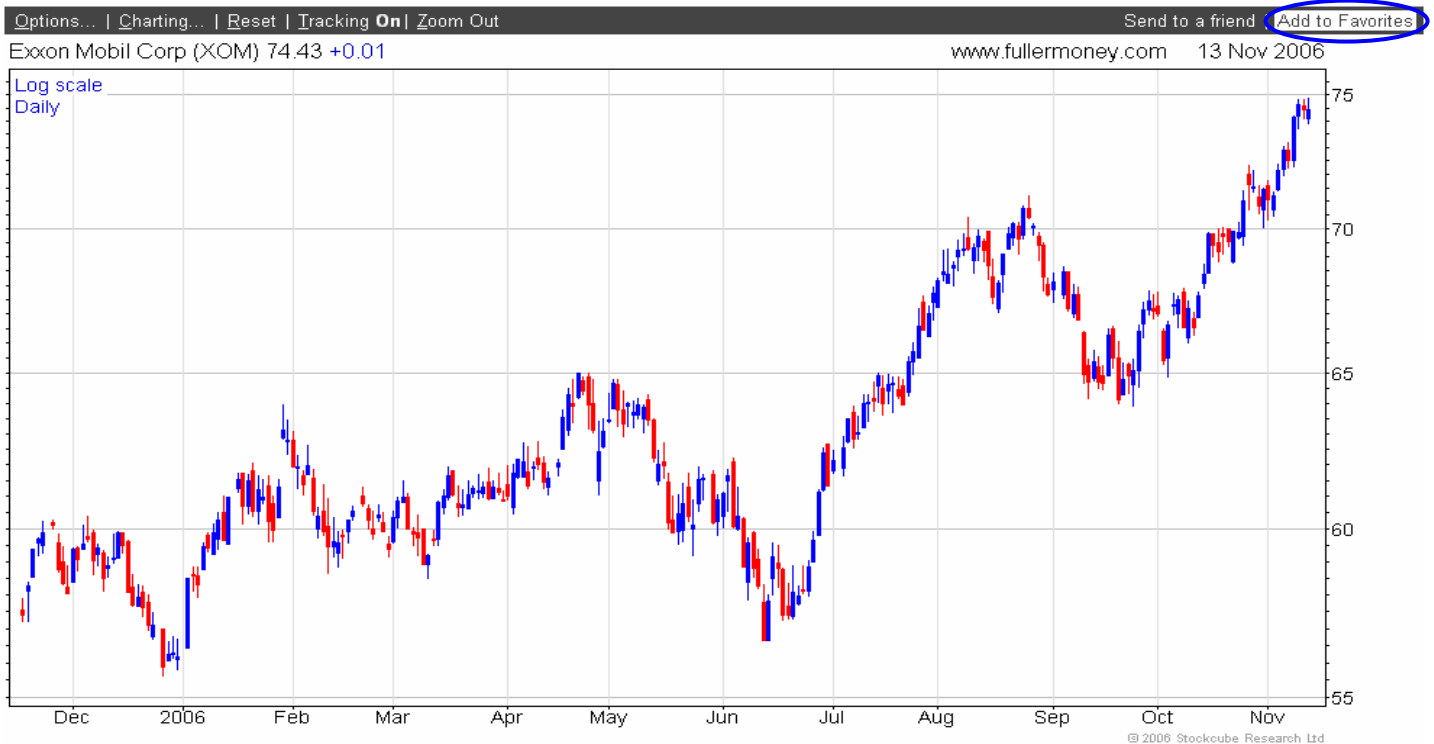
We have also included a text box for your convenience.



## Add to Favourites

The “Favourites” feature allows subscribers to create their own personal list of instruments.

To add an instrument to your Favourites list, select it from the relevant menu, then click on the “Add to Favourites” tab in the top right of the chart. (See the illustration below). A pop-up appears to inform you that the equity has been added.



For all other instruments apart from those in the International Equity Library, they can be added your “Favourites” list by simply clicking in the box to the left of the instrument in the main menu. (See the illustration on the next page.)

To view your “Favourites” go to the Favourites listing at the top of the main drop down menu.

fullermoney.com Contact Us View/Renew Your Subscription

<< Back to Comment of the Day Chart: Major Charts List Prev Next Search Chart (select)

Select from Major Charts: [View All Charts](#)

<input type="checkbox"/> S&P 500 <a href="#">P&amp;F</a> <a href="#">Daily</a> <a href="#">Weekly</a>	<input type="checkbox"/> 30yr Treasuries <a href="#">P&amp;F</a> <a href="#">Daily</a> <a href="#">Weekly</a>	<input checked="" type="checkbox"/> CRB Index <a href="#">P&amp;F</a> <a href="#">Daily</a> <a href="#">Weekly</a>
<input type="checkbox"/> Nasdaq Composite <a href="#">P&amp;F</a> <a href="#">Daily</a> <a href="#">Weekly</a>	<input type="checkbox"/> 10yr Treasuries <a href="#">P&amp;F</a> <a href="#">Daily</a> <a href="#">Weekly</a>	<input checked="" type="checkbox"/> Gold <a href="#">P&amp;F</a> <a href="#">Daily</a> <a href="#">Weekly</a>
<input type="checkbox"/> Canada <a href="#">P&amp;F</a> <a href="#">Daily</a> <a href="#">Weekly</a>	<input type="checkbox"/> JGB's <a href="#">P&amp;F</a> <a href="#">Daily</a> <a href="#">Weekly</a>	<input type="checkbox"/> Gold 2nd Month Continuation <a href="#">P&amp;F</a> <a href="#">Daily</a> <a href="#">Weekly</a>
<input type="checkbox"/> UK <a href="#">P&amp;F</a> <a href="#">Daily</a> <a href="#">Weekly</a>	<input type="checkbox"/> Bunds <a href="#">P&amp;F</a> <a href="#">Daily</a> <a href="#">Weekly</a>	<input type="checkbox"/> Silver <a href="#">P&amp;F</a> <a href="#">Daily</a> <a href="#">Weekly</a>
<input type="checkbox"/> Germany <a href="#">P&amp;F</a> <a href="#">Daily</a> <a href="#">Weekly</a>	<input type="checkbox"/> Gilts <a href="#">P&amp;F</a> <a href="#">Daily</a> <a href="#">Weekly</a>	<input type="checkbox"/> Silver 1st mth <a href="#">P&amp;F</a> <a href="#">Daily</a> <a href="#">Weekly</a>
<input type="checkbox"/> France <a href="#">P&amp;F</a> <a href="#">Daily</a> <a href="#">Weekly</a>	<input checked="" type="checkbox"/> Dollar Index <a href="#">P&amp;F</a> <a href="#">Daily</a> <a href="#">Weekly</a>	<input type="checkbox"/> Platinum <a href="#">P&amp;F</a> <a href="#">Daily</a> <a href="#">Weekly</a>
<input type="checkbox"/> Switzerland <a href="#">P&amp;F</a> <a href="#">Daily</a> <a href="#">Weekly</a>	<input checked="" type="checkbox"/> USD per 1 EUR <a href="#">P&amp;F</a> <a href="#">Daily</a> <a href="#">Weekly</a>	<input type="checkbox"/> Copper (CMX) <a href="#">P&amp;F</a> <a href="#">Daily</a> <a href="#">Weekly</a>
<input type="checkbox"/> Sweden <a href="#">P&amp;F</a> <a href="#">Daily</a> <a href="#">Weekly</a>	<input checked="" type="checkbox"/> JPY per 1 USD <a href="#">P&amp;F</a> <a href="#">Daily</a> <a href="#">Weekly</a>	<input type="checkbox"/> LME Nickel 3mth <a href="#">P&amp;F</a> <a href="#">Daily</a> <a href="#">Weekly</a>
<input type="checkbox"/> Italy <a href="#">P&amp;F</a> <a href="#">Daily</a> <a href="#">Weekly</a>	<input type="checkbox"/> SGD per 1 USD <a href="#">P&amp;F</a> <a href="#">Daily</a> <a href="#">Weekly</a>	<input checked="" type="checkbox"/> Oil <a href="#">P&amp;F</a> <a href="#">Daily</a> <a href="#">Weekly</a>
<input type="checkbox"/> Nikkei 225 <a href="#">P&amp;F</a> <a href="#">Daily</a> <a href="#">Weekly</a>	<input type="checkbox"/> USD per 1 GBP <a href="#">P&amp;F</a> <a href="#">Daily</a> <a href="#">Weekly</a>	<input type="checkbox"/> Natural Gas <a href="#">P&amp;F</a> <a href="#">Daily</a> <a href="#">Weekly</a>
<input type="checkbox"/> Topix 2nd Section <a href="#">P&amp;F</a> <a href="#">Daily</a> <a href="#">Weekly</a>	<input type="checkbox"/> CHF per 1 USD <a href="#">P&amp;F</a> <a href="#">Daily</a> <a href="#">Weekly</a>	<input type="checkbox"/> Soybeans <a href="#">P&amp;F</a> <a href="#">Daily</a> <a href="#">Weekly</a>
<input type="checkbox"/> Australia <a href="#">P&amp;F</a> <a href="#">Daily</a> <a href="#">Weekly</a>	<input type="checkbox"/> USD per 1 AUD <a href="#">P&amp;F</a> <a href="#">Daily</a> <a href="#">Weekly</a>	<input type="checkbox"/> Corn <a href="#">P&amp;F</a> <a href="#">Daily</a> <a href="#">Weekly</a>
<input type="checkbox"/> Hong Kong <a href="#">P&amp;F</a> <a href="#">Daily</a> <a href="#">Weekly</a>	<input type="checkbox"/> USD per 1 NZD <a href="#">P&amp;F</a> <a href="#">Daily</a> <a href="#">Weekly</a>	<input type="checkbox"/> Coffee Arabica (NME) <a href="#">P&amp;F</a> <a href="#">Daily</a> <a href="#">Weekly</a>
<input type="checkbox"/> Singapore <a href="#">P&amp;F</a> <a href="#">Daily</a> <a href="#">Weekly</a>	<input type="checkbox"/> ZAR per 1 USD <a href="#">P&amp;F</a> <a href="#">Daily</a> <a href="#">Weekly</a>	<input type="checkbox"/> Cocoa (NME) <a href="#">P&amp;F</a> <a href="#">Daily</a> <a href="#">Weekly</a>
<input type="checkbox"/> Thailand <a href="#">P&amp;F</a> <a href="#">Daily</a> <a href="#">Weekly</a>	<input checked="" type="checkbox"/> GBP per 1 EUR <a href="#">P&amp;F</a> <a href="#">Daily</a> <a href="#">Weekly</a>	<input type="checkbox"/> OEX Volatility Index (VIX) <a href="#">P&amp;F</a> <a href="#">Daily</a> <a href="#">Weekly</a>
<input type="checkbox"/> India Mumbai <a href="#">P&amp;F</a> <a href="#">Daily</a> <a href="#">Weekly</a>	<input type="checkbox"/> JPY per 1 EUR <a href="#">P&amp;F</a> <a href="#">Daily</a> <a href="#">Weekly</a>	<input type="checkbox"/> Nasdaq Volatility Index (VXN) <a href="#">P&amp;F</a> <a href="#">Daily</a> <a href="#">Weekly</a>
<input type="checkbox"/> Brazil <a href="#">P&amp;F</a> <a href="#">Daily</a> <a href="#">Weekly</a>	<input type="checkbox"/> ZAR per 1 GBP <a href="#">P&amp;F</a> <a href="#">Daily</a> <a href="#">Weekly</a>	<input type="checkbox"/> MSCI Far East Index <a href="#">P&amp;F</a> <a href="#">Daily</a> <a href="#">Weekly</a>

Click on the tick boxes to select [your favorites](#)

More charts available at [www.investorsintelligence.com](http://www.investorsintelligence.com)

<< Back to Comment of the Day

To click through your Favourites or any category you wish from the drop down menu, click on the “View All Charts” tab which is situated at the top left of the main part of the page.

To change the order of your selections in your Favourites section of the Chart Library, pull up your Favourites list, deselect all of your options, then reselect each one in your preferred order. Then refresh the page.

To view your “Favourites” go to the Favourites listing at the top of the main drop down menu.

## Back to comment of the day

There is a << Back to Comment of the Day link in the top left hand corner of the screen. This will take you back to Comment of the Day.

**Shortcuts** – There are a number of shortcuts for the new aspects of the Chart Library.

‘O’ – switches the Options tab on.

‘C’ – switches the Charting tab on.

‘R’ – resets the Chart Library to its default settings.

‘X’ – switches the crosshair on and off.

‘Z’ – switches returns the zoom back to the original setting.

We trust that you will profit from the FullerMoney Chart Library, which remains a work in progress.